

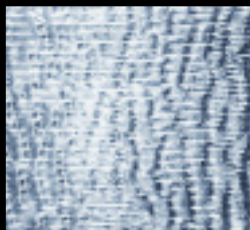


Optimum Art Glass is made from 98% recycled cullet!  
 This process offers a clarity not always achieved in cathedral glass,  
 hence its appeal with glass artists.  
 Optimum offers a series of eight textures available in Clear & Clear Iridescent.

**OPTIMUM ART GLASS SAMPLE BOX:**

- Cat. No. OPSB
- Sample boxes include 1 of each texture in Clear or Clear Iridized.

**SHEET SIZE: 20" x 40"**



**401-ALLEGRE**  
B



**401-AVANTIQUE**  
B



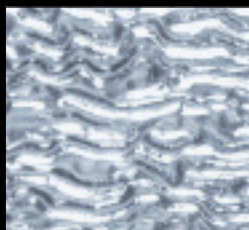
**401-FOXTAIL**  
A



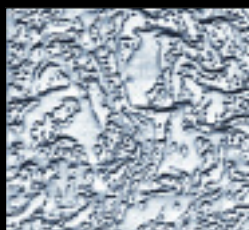
**401-NOOGIE**  
A



**401-PINNACLE**  
A



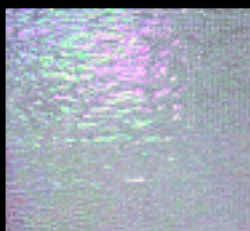
**401-RIPPLE**  
B



**401-SLUSH**  
A



**401-TRAPUNTO**  
A



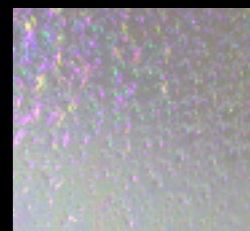
**401-ALLEGRE-IRID**  
BR



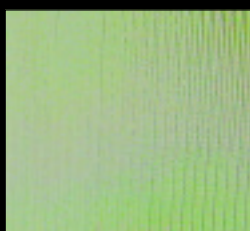
**401-AVANTIQUE-IRID**  
BR



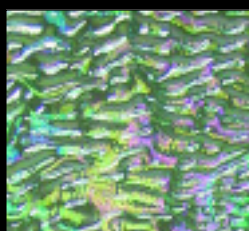
**401-FOXTAIL-IRID**  
AR



**401-NOOGIE-IRID**  
AR



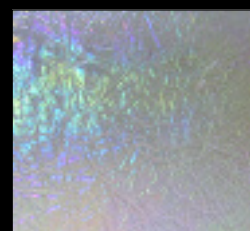
**401-PINNACLE-IRID**  
AR



**401-RIPPLE-IRID**  
BR



**401-SLUSH-IRID**  
AR



**401-TRAPUNTO-IRID**  
AR

Available styles indicated by price code.

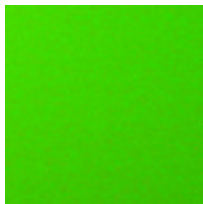
# Float Fire 82®

*A fusible line of colored glass compatible with float glass*

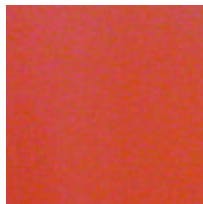
There are 19 Float Fire colors that can be easily layered with ordinary clear float glass (window glass). They are designed for use as tiles, table tops, bowls, chess boards, etc. The Co-efficient of Expansion is 82 +/-3, the same as most Float Glass. Always test for compatibility with your source of float glass.

**Excellent  
for Sandblasting!**

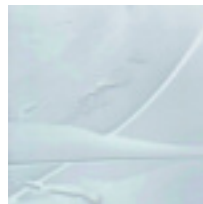
Float Fire



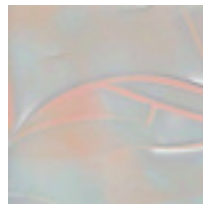
**F-602**  
Moss Green Opaque  
A



**F-608**  
Melon Opaque  
B



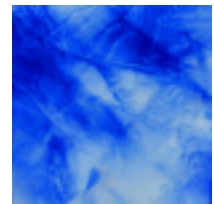
**F-1000**  
White  
A



**F-1001**  
Champagne/White  
A



**F-1005**  
Burgundy/White  
B



**F-1007**  
Cobalt Blue/White  
B



**F-1008**  
Aqua/White  
A



**F-1010**  
Green/White  
B



**F-1013**  
Orange/Yellow  
B



**F-1017**  
Flamingo/White  
B



**F-1018**  
Lt. Blue/White  
A



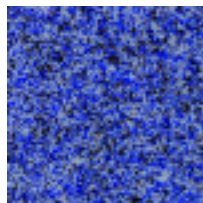
**F-1020**  
Black/White  
A



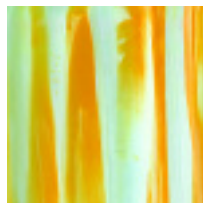
**F-1021**  
Pale Yellow/White  
B



**F-1210**  
Black Granite/  
Medium Grain  
D



**F-1250**  
Blue Granite  
D



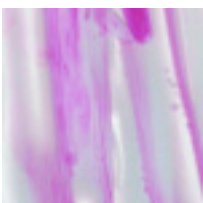
**F-2002**  
Caramel/White  
A

#### FLOAT FIRE MINI SAMPLER

Assortment of 18 styles cut approx.  
9" x 10.5". All 82 C.O.E.  
**Order As: FF-MINI**

#### FLOAT FIRE COMBO PACK

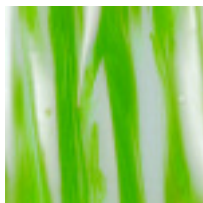
Assortment of 5 styles cut approx.  
13.5" x 15.5". All 82 C.O.E.  
**Order As: FF-COMBO-PACK**



**F-2005**  
Burgandy/White  
C



**F-2006**  
Red/White  
C



**F-2010**  
Green/White  
C

Float Glass (window glass) is produced by flowing the melted glass over a bed of molten tin. This leaves an invisible but sometimes problematic haze on one side. When fusing with Float Fire, the "tin" side should be the exposed side. An ultraviolet light (Cat. No. 52180, Page A21) is a suitable light source for detecting the filmed tin side of the glass.

#### FLOAT FIRE 82® SHEET SIZE (current stock)

**Approx:** 27.5" x 15.5" (approx: 3 sq. ft. per sheet.)  
Half of a Factory Sized Sheet.

**Thickness:** 2mm

#### SUGGESTED FIRING TEMPERATURE

**Tack Fuse/Slump:** 1415-1450°F (768-788°C)

**Full Fuse:** 1525-1560°F (829-849°C)

**Anneal:** 1050°F

#### FLOAT FIRE 82® SAMPLE BOX

**Cat. No. FFSB**

#### OTHER PRODUCTS

Compatible Float Glass Frit & Stringers, page A21.  
(Cat. No. 744010 and Cat. Nos. 7440-)

Tin Detector, Cat. No. 52180, page A21.